

Arts and Science Staff Network News

September

Absolutely Useless Trivia!

- Marching Mizzou made their first appearance at an MU vs. KS game in 1885
- Lowry Hall, home to the College of Arts and Science, was originally the Bible College.

Inside this issue:

Get to Know Traci Wren	2
Limelight	2
Welcome New Employees	2
Going Green	3
Staff Endowment Questions	3
Events Wrap Up	3
Puzzle	4

Letter from the Dean

Dear Arts and Science Staff Members:

A new semester is upon us once again. I know what a busy time of year it is for you. Between the influx of students and faculty requests, I am sure everyone is tirelessly plugging away. I appreciate all that each of you does to make the College of Arts and Science operate smoothly.

This semester will be another record enrollment that would not be possible without such a tremendous faculty and staff. Working for the University of

Missouri, you are part of a larger entity that without your input, patience, and positive attitude would not be able to maintain its strong traditions of excellence.

I know I have said this before, but I would like to reiterate: If there are any issues that are important to you, please let me know. My door is always open.

I hope you have a terrific semester!

Sincerely,

Dean Michael J. O'Brien



Letter from ASSN Chair

Hello Everyone,

The Arts and Science Staff Network board has once again elected new officers. I am honored to be the chair of the ASSN this year.

Our hope is to make this year an exciting one with plenty of

opportunity to get involved and meet your colleagues! If you have any suggestions for activities or charity drives, please let me know.

Serving on the ASSN

board is a great way to meet your fellow staff and make connections within the college. I look forward to seeing you during the many ASSN activities this year! -Liz Schulte



Get to Know Traci Wren!

How did you start at MU?

I'd been working part-time in accounting at Mack Hils in Moberly for 3-4 years to have more time to help my boys with school, etc. They started laying a few people off because they supplied parts for cars and business had slowed down. I was devastated because I'd never been fired or laid off. I applied for 2-3 positions on campus, was called for an interview in the Dean's Office and was offered the job. Up to that

point I would have never thought about driving to Columbia every day. I really enjoy my job here at MU and hopefully they'll keep me around a few more years!

If you were not working at Mizzou what would you be doing?

Oh my, I really have no idea! In my dreams I'd be rich and just do anything I wanted to do!

Your favorite place in mid-Missouri?

Home.

What are you most proud of in your life?

My family....Hubby, Mark, and my sons, Josh, 24, and Cody, 21.

If you could have dinner with anyone dead or alive who would it be?

Both sets of my grandparents who are deceased now. I never knew my paternal grandparents and I miss my maternal grandparents very much.

"I really enjoy my job here at MU and hopefully they'll keep me around a few more years!"



We would like to feature **you** and **your** department on the ASSN Web site and newsletter!

Showcase **your** department and introduce **yourself** to the staff in the rest of the college. Tell us what **you** do, where **you** are located on campus, and what makes **you** unique.

Email **your** name, campus address, and a fun fact about **yourself** to Liz Schulte.

schulteea@missouri.edu

We look forward to hearing from **you**!



Welcome New Employees!

The Art & Science Staff Network welcomes all new employees to the college!

Please keep your eyes peeled for the Welcome Committee; you never know when they might show up bearing goodies! Please help us welcome:

Cindy Irsik,
Administrative Assistant,
Anthropology Department

Adrienne Vaughn,
Academic Advisor II,
Psychological Science

Sara Rowley,
Sr. Research Lab Technician,
Geological Science

Nicholas Holliday,
Advisor,
Biological Science

Margaret Lawless,
Large Instrument Ensemble
Coordinator,
School of Music



Going Green– Best Cleaners in Your Pantry

September



White Vinegar. Vinegar's mildly acidic nature helps it break down dirt and grime, and kills bacteria, mold, and germs. Its pungent odor, which disappears as soon as it dries, is nontoxic, unlike most commercial cleaning solutions. Be careful when using it on tile grout (too concentrated can be damaging), and never use it on marble or other porous stone surfaces.

Lemon. Lemon's cleaning powers extend beyond a fresh scent. Its acidic properties can cut through grease and grime better than most artificial products.

Baking Soda. This benign white powder serves dual purposes: as an abrasive cleaner and a frontline odor fighter. Use a water-and-baking-soda paste on most fabrics to remove stains.

Salt. Pour a strong concentration of warm salt water down sink drains to avoid grease buildup. Rub pure salt on cups and mugs to remove stubborn tea and coffee stains.



Staff Endowment Fund Questions

What is the Staff Endowment Fund?

The Staff Endowment Fund is an endowment set up to provide continual funding for staff recognition awards for the staff members of the College of Arts and Science.



How does it benefit me?

If you are a staff member of the College of Arts and Science you are eligible to receive the award. If you are a faculty member, contributing to this endowment is a great way to show your appreciation of the hard-working staff across the college.

Why should I give to the endowment?

You should give to this endowment to ensure recognition of the outstanding staff members who go above and beyond the call of duty.



“If you are a staff member of the College of Arts and Science you are eligible to receive the award.”

Events Wrap Up



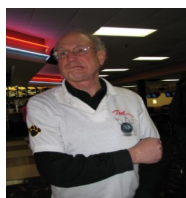
The ASSN had lots of fun last year! Last [September](#) we kicked off the year with the Marine Parents Care Package drive, where we collected and delivered over 20 boxes of donations to the local Marine Parents organization for their Christmas Care Packages, along with cash donations.

[October](#) saw our first stop on the “What’s Up on Campus” Progressive Tour, with a feisty group braving the weather to eat lunch at Eva J’s Café.

Our Winter Charity Drive launched in [November](#), and yielded countless stocking-stuffer items for the moms and grandmothers of children in the Granny’s House Program, along with cash donations to brighten their Holidays.



[December](#) saw the resurrection of the Winterfest Holiday Potluck Luncheon! We had a bounty of outstanding door prizes, scrumptious dishes, fabulous live music, silly games, and plenty of laughs to usher in the Holiday fun!



[February](#)’s A&S Staff Appreciation Week brought us the long-awaited Bowling Tournament, which was great fun for everyone!

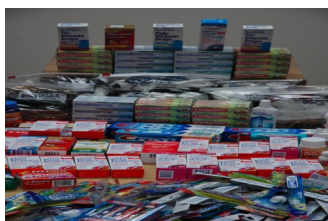
We made our second stop on the “What’s Up on Campus” Progressive Tour in [March](#), at the Anthropology Museum where Candace Sall gave our group a fantastic tour of the current exhibits.

Continued page 4



Events Continued:

[April](#) gave us the perfect Spring weather for a Bake/Book Sale, so we seized the opportunity! Our Bake/Book Sale Fundraiser was a wild success, raising over \$450 in just two days for the ASSN.



Our Spring Charity Drive, “Made in the Shade,” spanned the end of [March](#) and the beginning of [April](#), and enabled us to collect 36 pounds of donations to benefit the North Belize Medical Mission, which took place in July. This was our first international outreach event, so we were thrilled by the turnout!

The fabulous ASSN Luncheon in [May](#), with the gorgeous table settings, the super food, and the chance to slip back to the 1904 World’s Fair in St. Louis, was the “bow” wrapping up our year of ASSN events. And what a year it was!

We can’t thank you enough for making this past year a **TREMENDOUS** success. We hope that more A&S Staff members will be excited to participate in this year’s fun!

Sudoku

LEVEL: Beginner

		9	6		7	4	3	1
8				5	3			9
	6		2			5		
		8	9					6
		2		4		7		5
					1			
			5	9	4	3		2
	2	7		3			1	
4			1		2	6	5	

www.dctech.com/sudoku/